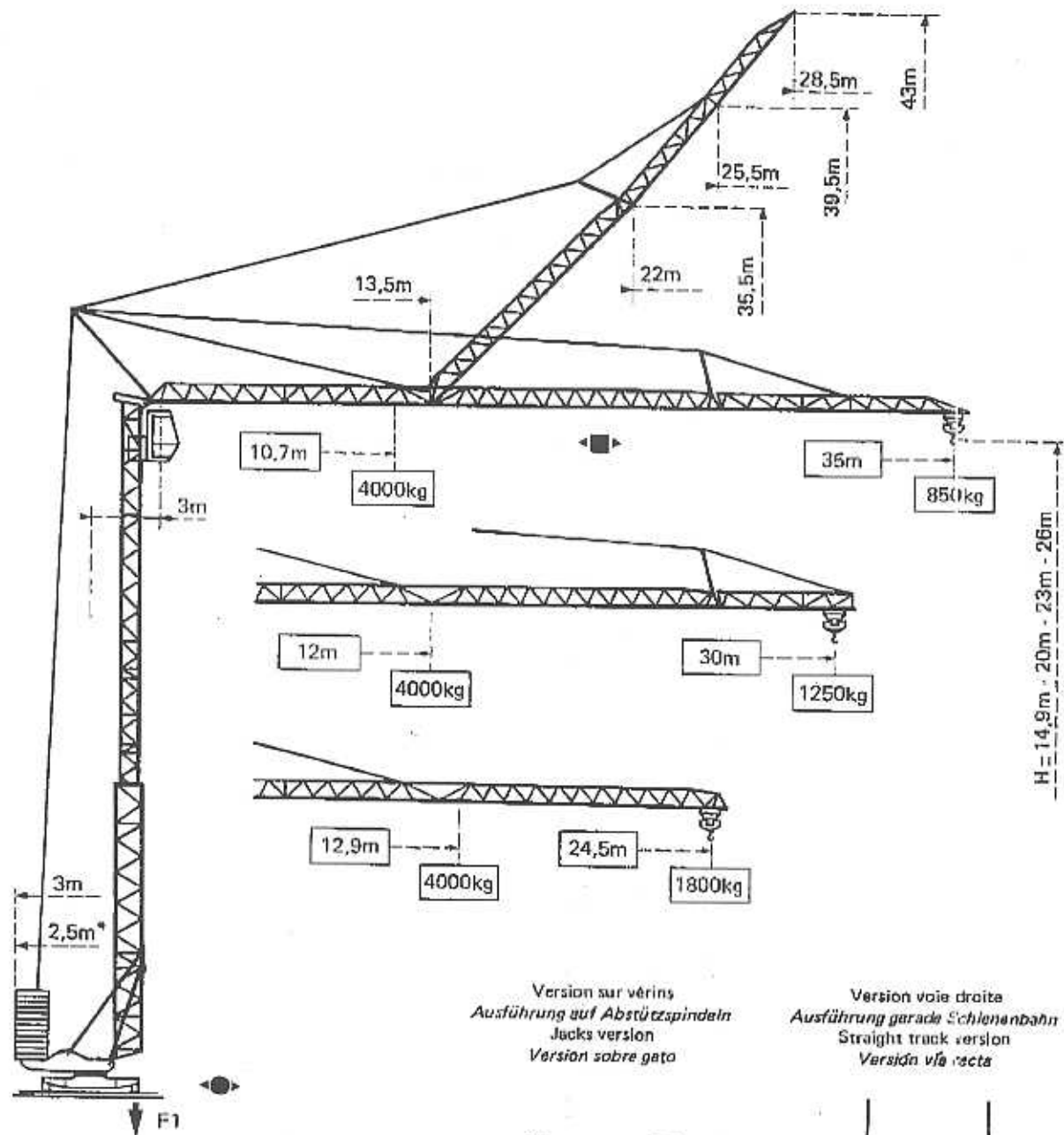


Josef Lührer K.G.
Baumaschinen - Verkauf
Vermietung - Kundendienst
Austraße 12, 6200 Jenbach/Tirol
Tel. 05244/6966 Fax: 05244/6966-6

GTMR 331A

POTAIN 

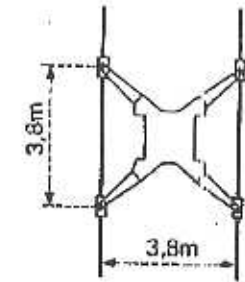
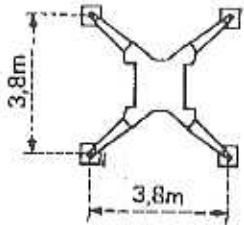
Cotes Abmessungen Dimensions Dimensiones



* = Lest spécial/Spezialballast
Special ballast/Lastre especial

Version sur vérins
Ausführung auf Abstützspindeln
Jacks version
Version sobre gato

Version voie droite
Ausführung gerade Schienenbahn
Straight track version
Versión vía recta



F1 = Réactions Eckdrücke Reacciones Reacciones

| | | |
|----|---------|---------|
| F1 | ● 18,9t | ■ 12,8t |
| ⊕ | 13,2t | |

● En service
■ Hors service
⊕ A vide sans lest ni train de transport, avec flèche et hauteur maximum.

● In Betrieb
■ Ausser Betrieb
⊕ Ohne Last, Ballast und Transportachse, mit Maximalausleger und Maximalhöhe.

● In service
■ Out of service
⊕ Without load, ballast or transport axles, with maximum jib and maximum height.

● En servicio
■ Fuera de servicio
⊕ Sin carga, sin lastre, ni tran de transporte, flacha y altura maximas.

Courbes de charges Lastkurven Load diagrams Curvas de cargas



| | | | | | | | | | | | | | | | | |
|-----|---|------|------|------|------|------|------|------|------|------|------|------|-----|-----|-----|----|
| 3 | → | 10,7 | 12 | 14 | 16 | 18 | 20 | 22 | 24 | 26 | 28 | 30 | 32 | 34 | 35 | m |
| 35m | ⊗ | 4000 | 3437 | 2816 | 2373 | 2041 | 1783 | 1578 | 1409 | 1269 | 1151 | 1049 | 961 | 884 | 850 | kg |

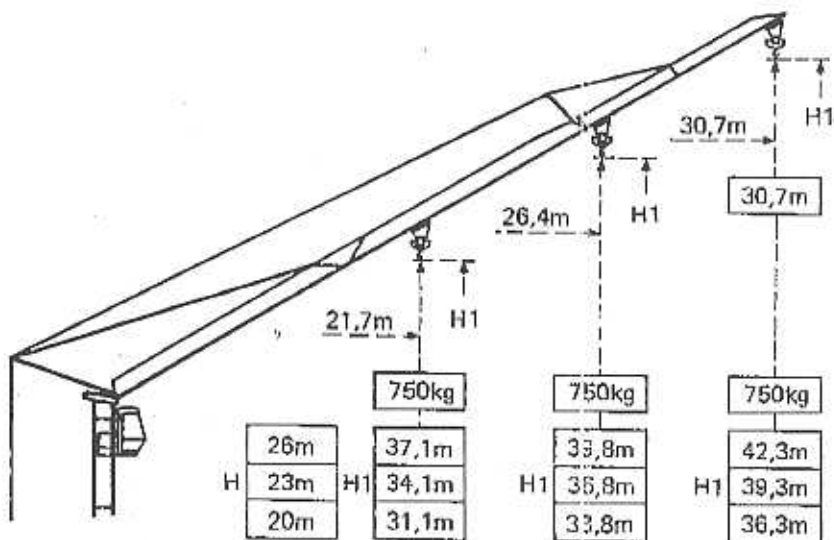
| | | | | | | | | | | | | |
|-----|---|------|------|------|------|------|------|------|------|------|------|----|
| 3 | → | 12 | 14 | 16 | 18 | 20 | 22 | 24 | 26 | 28 | 30 | m |
| 30m | ⊗ | 4000 | 3285 | 2774 | 2392 | 2095 | 1858 | 1664 | 1503 | 1366 | 1250 | kg |

| | | | | | | | | | |
|-------|---|------|------|------|------|------|------|------|----|
| 3 | → | 12,9 | 14 | 16 | 18 | 20 | 22 | 24,5 | m |
| 24,5m | ⊗ | 4000 | 3620 | 3061 | 2643 | 2318 | 2059 | 1800 | kg |

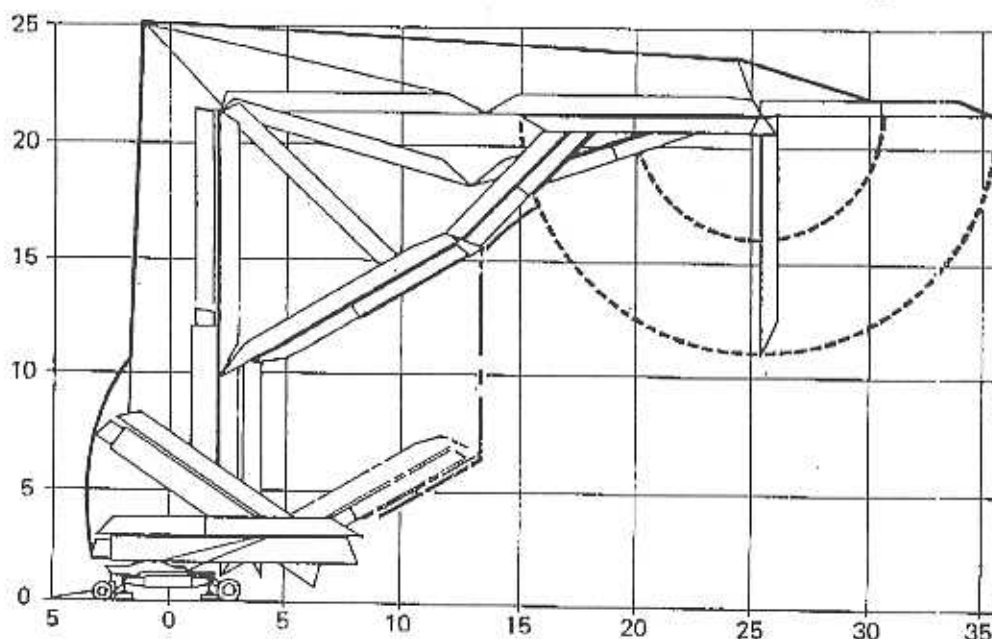
Flèche relevée Ausleger in Steilstellung Luffing jib Flecha izada

2D1V2
 Chariot bloqué (toutes positions sur flèche)
 Verriegelte Laufkatze
 Trolley locked
 Carro bloqueado

3D2V4
 Chariot distributeur
 Verfahrbare Laufkatze
 Traversing trolley
 Carro distribuidor



Montage Montage Erection Montaje


















Mecanismes

Antriebe

Mechanisms

Mecanismos

| | | | | m/min | kg | ch - PS hp | kW |
|-----------------------------------------------------------------------------------------------------------|----------------------------------------------------------------------------------------------------|-----------------------------------------------------------------------------------|-----------------------------------------------------------------------------------|-------------------------------------------------------------------------------------|-------|---------------|-----|
| Levage Heben Hoisting Elevación | 15 TDPC 10  |  |  | 8,3 | 2000 | 5 | 3,7 |
| | | |  | 25 | 2000 | 15 | 11 |
| | |  |  | 50 | 1000 | 5 | 3,7 |
| | | |  | 4,15 | 4000 | | |
| | | |  | 12,5 | 4000 | 15 | 11 |
| | | |  | 25 | 2000 | | |
| Distribution - Katzfahren Trolleying - Distribución |  | 2 D1 V2 | 35 |  | 4 | 3 | |
| | | 3 D2 V4 | 22-44 | | 4 | 3 | |
| Orientation - Schwenken Slewing - Orientación |  | RCV 22 | 0 → 0,8 tr/min U/min-rpm |  | 3 | 2,2 | |
| Translation - Kranfahren Travelling - Traslación |  | TVD 122 | 25 |  | 2 x 2 | 2 x 1,5 | |
| Réseau - Netzstrom - Mains supply - Red | | | | | | 380V - 50 HZ | |
| Puissance électrique nécessaire - Anschlusswert - Necessary electric power - Potencia eléctrica necesaria | | | | | | 20 KVA | |
| Groupe électrogène - Stomagggregat - Generator set - Grupo electrogeno | | | | | | * | |

* Nous consulter - Auf Anfrage - Consult us - Consultarnos

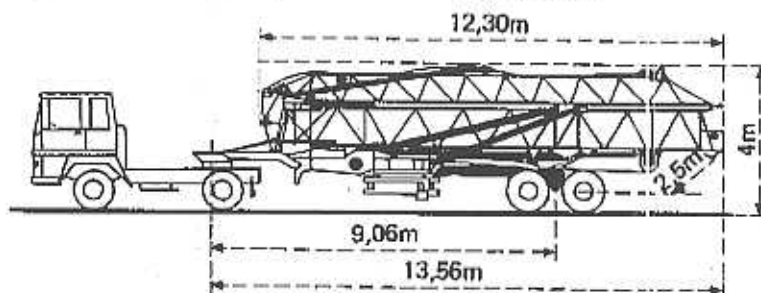
Transport

Transport

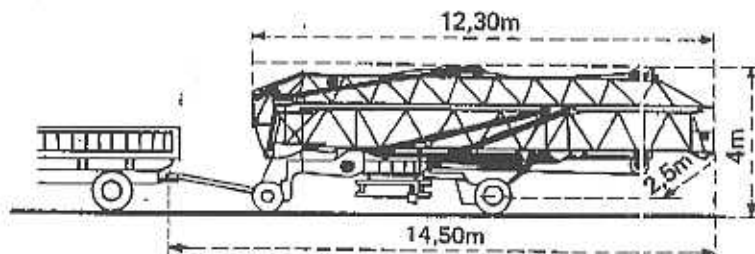
Transport

Transporte

Version semi-portée
 Ausführung als Sattelaufleger
 Tractor towed version
 Versión en semi-remolque



Version tractée derrière camion
 Ausführung als LKW Anhänger
 Lorry towed version
 Versión remolcable detrás de un camión



NF E 52081 - B2 | DIN 15018 H1 B3

POTAIN 

18, rue de Charbonnières - B.P. 173 F
 69132 ECULLY Cedex - FRANCE
 Tél. : 78.33.81.81 - Télex 330 179 - Télex Export 375 213 F

POTAIN GmbH 6082 MÖRFELDEN WALLDORF
 Nordendstr. 79-87 - Postfach 420
 Tél. : 06 105 704.0 - Télex 4.1857 45

Josef Lauer K.G.

Baumaschinen - Verkauf
 Vermietung - Kundendienst
 Austraße 12, 6200 Jenbach/Tirol
 Tel. 05244/6966 Fax: 05244/6966-6

GTMR 331A

Ref. 8609 KOC 2